

# Lennox Estate News



Homes for  
Wandsworth



## Newsletter 3

**Welcome** to the latest edition of the Lennox Estate newsletter.

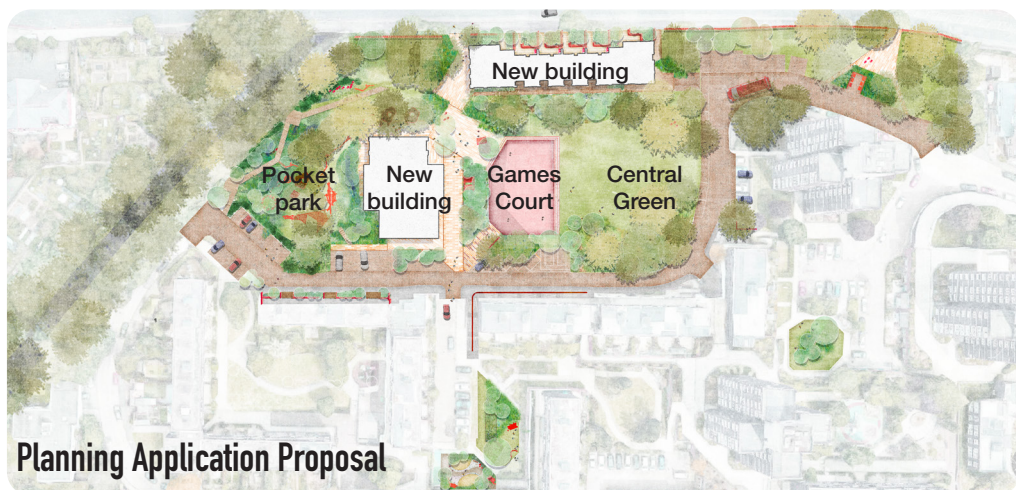
This year, we have been refining the design proposals and preparing the planning application documents before submission to the Local Planning Authority.

Please find a brief summary of the proposals within this update.

**Keep up to date via**  
our website here:



[www.lennox-homesforwandsworth.co.uk/](http://www.lennox-homesforwandsworth.co.uk/)



## What you told us!

From previous consultations, you told us how important **green space and play space** is to you, how you wanted the new buildings to be **lower in height and sympathetic to the existing estate**, and that the organisation and management of **parking** is important to you.

We have addressed your comments by:

- Re-providing the games court and making it more flexible for a range of activities. The size of the games court has also increased slightly since you last saw it.
- Including improvements to existing play areas, streets and spaces across the whole estate.
- Reducing the height of the taller building to 14 storeys.
- Lighter bricks, dark metal, and concrete have been chosen to go well with the existing materials on the estate.
- Testing the new road layout to make sure that it will work for all vehicles including refuse vehicles, fire engines and buses.



## Proposed new development

- 81 new homes for social rent within two new buildings.
- Existing residents of the Lennox Estate who are in housing need or looking to downsize will be given priority to move into the new homes through a Local Lettings Plan.
- A new community space will be built on the ground floor of the taller building, with noise control in mind, to replace the existing facility.
- New and improved open and green spaces, including planting of 132 new trees.
- New play spaces and an improved, replacement ball court.
- Controlled parking and free permits for existing estate residents.
- Improved walking and cycling routes.
- A series of improvements to existing open spaces, play spaces and streets across the estate.

**81 new  
homes  
for social  
rent**

**237m<sup>2</sup>**  
of flexible  
community space

**5,641m<sup>2</sup>** of public  
open space

**2,081m<sup>2</sup>** of play  
space

**58%** will be family  
homes of 2+ bedrooms

**10% of new homes**  
will be designed for  
wheelchair users





# What's next?

## Winter 2024

We held an exhibition to show you the latest designs for new buildings and green spaces. We also displayed all the entries for the art competition and announced the winners.

## Summer 2025

Preparation and refining of development plans to submit for planning permission.

We are  
here

## Autumn/Winter 2025/26

We are currently finalising the planning application and expect to submit it to Wandsworth Planning Department in November. Once submitted, the Local Planning Authority will begin its review and start the statutory consultation process.

As part of this process, **we will write to all residents directly** with details of the application. You will also receive a formal consultation letter from the Planning Department.



We will continue to keep you informed through future newsletters and **Lennox News** bulletins, which will include updates on the planning process, local events, and Council services.

